

Christopher Fulkerson

# Moys Icos

for orchestra

2008

VIOLA

[ChristopherFulkerson.com](http://ChristopherFulkerson.com)

Viola

# MOYS ICOS

for orchestra

Christopher Fulkerson

Moderato con moto

♩ = 46

1 *p* *sf* *p* *p* *sf*

4 *p* *p* *sf* *p*

7 *p* *sf*

10 *p* *sf* *p*

13 *sf* *p* *p* *sf*

16 *p* *sf* *p*

19 **C**

*p sf p p*

22

*sf p p sf p*

25 **D**

*p sf p p*

28

*p sf p p*

31 **E** harmonics always sforzando pianissimo

*pp*

35

*pp*

39 **F** **G**

*pp*

Viola

52 **H**

56

59

62 **J**

65

68

70 **K**

73

76 **L**

79 **M**

8

Viola

89 **N**

*p sf p p p sf p p*

91

*sf p p sf p p*

93

*sf p p p sf*

**O**

Ossia Measures 97-100:  
Soloists

95

*p sf p*

98

*p sf p p*

99

*sf p p p p sf p*

101

**4**

Viola

**P**

Ossia Measures 105-114:

Soloists

105

Measure 105: A single measure in 3/8 time. It begins with a whole rest. The first eighth note is a quarter note G4 (b2), followed by a quarter note A4 (b2), and a quarter note B4 (b2). A slur and a '3' above the staff indicate a triplet of these notes. The second eighth note is a quarter note A4 (b2), followed by a quarter note G4 (b2), and a quarter note F4 (b2). A slur and a '3' above the staff indicate a triplet of these notes. The third eighth note is a quarter note G4 (b2), followed by a quarter note F4 (b2), and a quarter note E4 (b2). A slur and a '3' above the staff indicate a triplet of these notes. The fourth eighth note is a quarter note D4 (b2), followed by a quarter note C4 (b2), and a quarter note B3 (b2). A slur and a '3' above the staff indicate a triplet of these notes. The measure ends with a whole rest. Dynamics: *p* (piano) under the first triplet, *sf* (sforzando) under the second triplet, and *p* (piano) under the third triplet.

107

Measure 107: A single measure in 3/8 time. It begins with a quarter note G4 (b2), followed by a quarter note A4 (b2), and a quarter note B4 (b2). A slur and a '3' above the staff indicate a triplet of these notes. The second eighth note is a quarter note A4 (b2), followed by a quarter note G4 (b2), and a quarter note F4 (b2). A slur and a '3' above the staff indicate a triplet of these notes. The third eighth note is a quarter note G4 (b2), followed by a quarter note F4 (b2), and a quarter note E4 (b2). A slur and a '3' above the staff indicate a triplet of these notes. The fourth eighth note is a quarter note D4 (b2), followed by a quarter note C4 (b2), and a quarter note B3 (b2). A slur and a '3' above the staff indicate a triplet of these notes. The measure ends with a whole rest. Dynamics: *p* (piano) under the first triplet, *sf* (sforzando) under the second triplet, *p* (piano) under the third triplet, and *p* (piano) under the fourth triplet.

109

Measure 109: A single measure in 3/8 time. It begins with a quarter note G4 (b2), followed by a quarter note A4 (b2), and a quarter note B4 (b2). A slur and a '3' above the staff indicate a triplet of these notes. The second eighth note is a quarter note A4 (b2), followed by a quarter note G4 (b2), and a quarter note F4 (b2). A slur and a '3' above the staff indicate a triplet of these notes. The third eighth note is a quarter note G4 (b2), followed by a quarter note F4 (b2), and a quarter note E4 (b2). A slur and a '3' above the staff indicate a triplet of these notes. The fourth eighth note is a quarter note D4 (b2), followed by a quarter note C4 (b2), and a quarter note B3 (b2). A slur and a '3' above the staff indicate a triplet of these notes. The measure ends with a whole rest. Dynamics: *p* (piano) under the first triplet, *sf* (sforzando) under the second triplet, *p* (piano) under the third triplet, and *sf* (sforzando) under the fourth triplet.

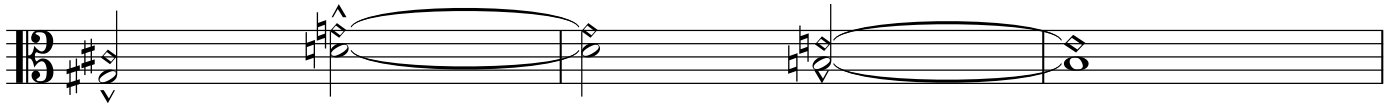
111

Measure 111: A single measure in 3/8 time. It begins with a quarter note G4 (b2), followed by a quarter note A4 (b2), and a quarter note B4 (b2). A slur and a '3' above the staff indicate a triplet of these notes. The second eighth note is a quarter note A4 (b2), followed by a quarter note G4 (b2), and a quarter note F4 (b2). A slur and a '3' above the staff indicate a triplet of these notes. The third eighth note is a quarter note G4 (b2), followed by a quarter note F4 (b2), and a quarter note E4 (b2). A slur and a '3' above the staff indicate a triplet of these notes. The fourth eighth note is a quarter note D4 (b2), followed by a quarter note C4 (b2), and a quarter note B3 (b2). A slur and a '3' above the staff indicate a triplet of these notes. The measure ends with a whole rest. Dynamics: *p* (piano) under the first triplet, *p* (piano) under the second triplet, *sf* (sforzando) under the third triplet, *p* (piano) under the fourth triplet, and *p* (piano) under the fifth triplet.

114

Measure 114: A single measure in 3/8 time. It begins with a quarter note G4 (b2), followed by a quarter note A4 (b2), and a quarter note B4 (b2). A slur and a '3' above the staff indicate a triplet of these notes. The second eighth note is a quarter note A4 (b2), followed by a quarter note G4 (b2), and a quarter note F4 (b2). A slur and a '3' above the staff indicate a triplet of these notes. The third eighth note is a quarter note G4 (b2), followed by a quarter note F4 (b2), and a quarter note E4 (b2). A slur and a '3' above the staff indicate a triplet of these notes. The fourth eighth note is a quarter note D4 (b2), followed by a quarter note C4 (b2), and a quarter note B3 (b2). A slur and a '3' above the staff indicate a triplet of these notes. The measure ends with a whole rest. Dynamics: *sf* (sforzando) under the first triplet, *p* (piano) under the second triplet, and *pp* (pianissimo) under the final notes. A box labeled 'Q' is positioned above the final notes.

117

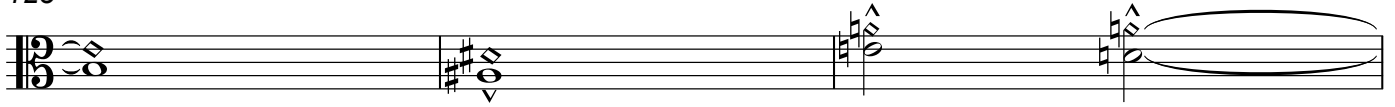


**R**

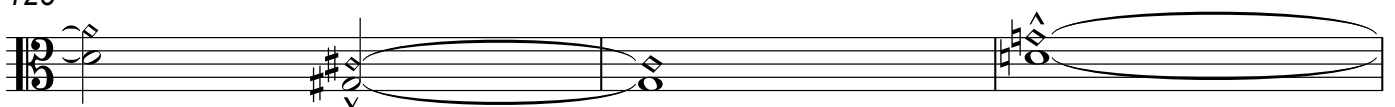
120



123

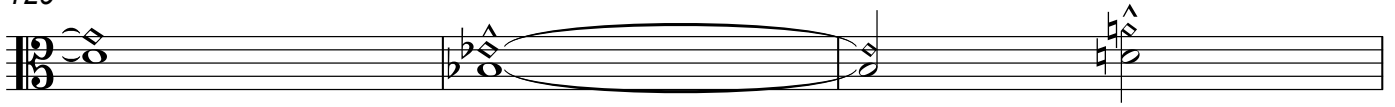


126



**S**

129



132 *p* *sf* *p* *p* *sf*

135 *p* *p* *sf* *p*

138 *sf* *p* *sf*

141 *p* *sf* *p*

144 *sf* *p* *p* *sf*

147 *p* *p* *sf* *p*

150 *p* *sf* *p* *p*

153 *sf* *p* *p* *sf* *p*

156 *p* *sf* *p* *p*

159 *p* *sf* *p* *p*

132 V

135 V

138 U

141 sul G

144 V

147 V

150 W

153 V

156 V

159 V

132 *p* *sf* *p* *p* *sf*

135 *p* *p* *sf* *p*

138 *sf* *p* *sf*

141 *p* *sf* *p*

144 *sf* *p* *p* *sf*

147 *p* *p* *sf* *p*

150 *p* *sf* *p* *p*

153 *sf* *p* *p* *sf* *p*

156 *p* *sf* *p* *p*

159 *p* *sf* *p* *p*

Viola

162 *p* *sf* *p* *pp* **X**

165 **Y**

168

172

175 **Z**

178

181 **AA**

184

187

190 **BB** *tacit al fine*

10

Viola

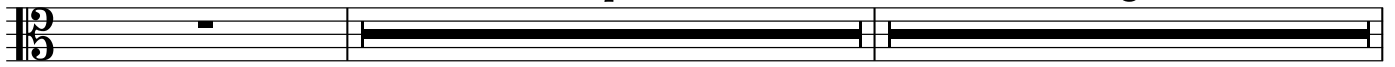
193

CC

7

DD

6



rall.

207

3

